

Scholars Portal Technical Infrastructure Overview

Health Data Summit, March 28, 2011



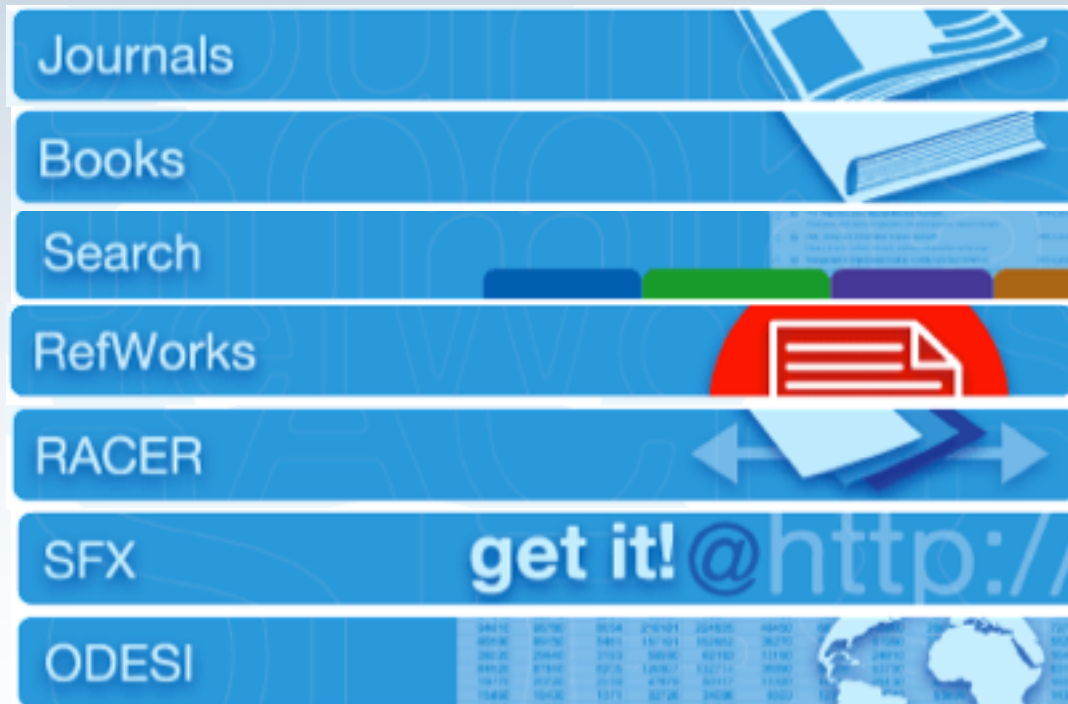


Scholars Portal

A Service of the Ontario Council of University Libraries

- A project of the Ontario Council of University Libraries (OCUL)
- Founded in 2002
- Provides shared technology infrastructure to access shared digital collections for all 21 university libraries in the province

Scholars Portal Services



+ *NEW* Geospatial and Health Informatics
Cyberinfrastructure Project

Providing Access to Digital Collections

- Standard practices for access to online library collections
 - IP-based access
 - Reverse proxy
 - Off-campus access via proxy / Shibboleth

Protecting Digital Collections



- Security practices
 - Physical Access
 - Remote Access
 - Backups
 - Firewall

Archiving Digital Collections

- Archival practices
 - OAIS Compliance
 - Trustworthy Digital Repository Certification
 - Data Curation

Access to Data Collections: ODESI

<odesi>

Advanced Search / Recherche avancée >>>

DESCRIPTION TABULATION ANALYSIS

Dataset: Canadian Tobacco Use Monitoring Survey

Variable CA_G10 : where do you usually get your cigarettes

| Values | Categories |
|--------|---|
| 1 | I buy them at a small grocery / corner store |
| 2 | I buy them at a supermarket |
| 3 | I buy them at a gasoline station |
| 4 | I buy them at another kind of store |
| 5 | I get them for free from family/friend or someone |
| 6 | I buy them from a First Nations Reserve |
| 7 | Other |
| 96 | Valid skip |
| 97 | Don't know |
| 98 | Refusal |
| 99 | Not stated |

N = Frequencies based on unweighted data; NW = Frequencies based on weighted data

Summary Statistics

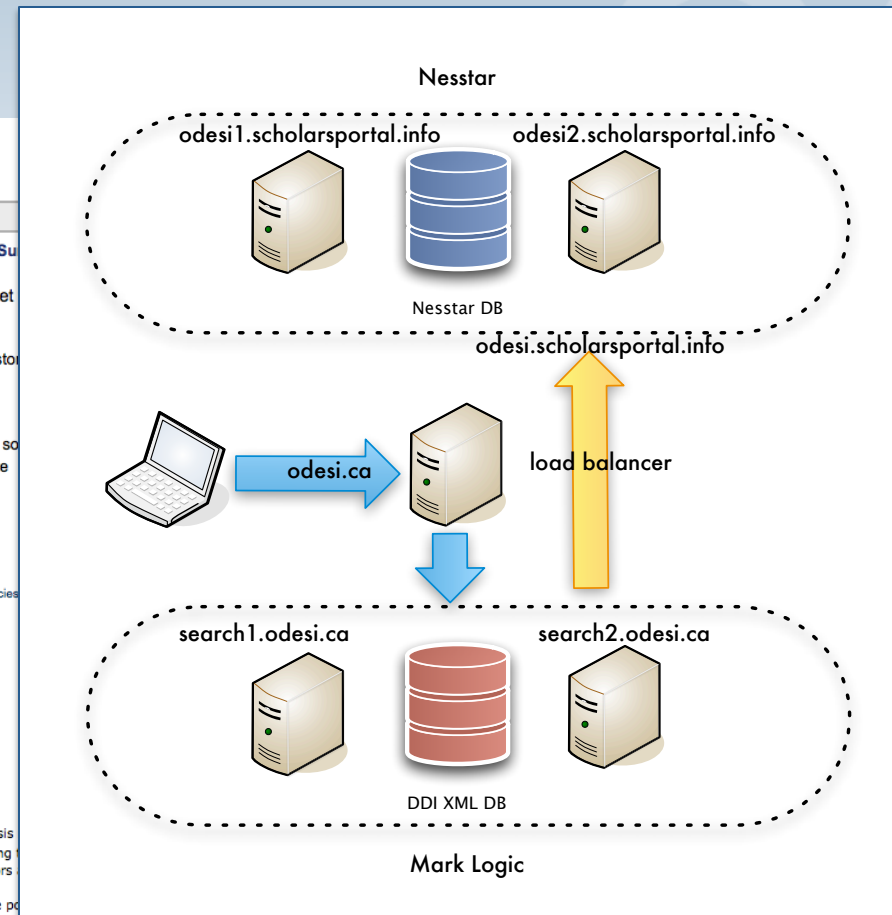
| | |
|---------------|------|
| Valid cases | 1633 |
| Missing cases | 7387 |

This variable is numeric

Universe
Current smokers

Note: In many cases, it is advisable to weight analysis the weighting procedures of the study before applying results need careful interpretation. The data collectors are not responsible for the accuracy of the data.

Note: Dans la plupart des cas, il est recommandé de pondérer les données avant d'appliquer des pondérations, sélectionner l'icône de poids et choisir la variable de pondération qui sera utilisée. Tous les résultats minutieusement. Les personnes chargées de la collecte et de la production des données ne peuvent être tenues responsables.



Access to Data Collections: Geospatial Portal

Scholars Portal Maps

Search Map (4)

Additional Options

72 Results

Route File (RTE)
The Route file is the core routing layer based on the Canmap roads layer (i.e., RDS). Many of the attributes found in the RDS file are in the RTE file but it also includes routing specific attributes. These include, but are not limited to: Route Hierarchy, Rush Traffic, Median, Speed Limits and Travel Time.

Purpose: Applications of this data product can include, but are not limited to: routing, fleet management, market analysis, target marketing, site location analysis, customer service and asset management.

Keywords: Street, Streetname, Address, Route Hierarchy, Classification, Carto, Rush Traffic, Median, Urban, Rural, Speed, Road Length, Miles, Kilometres, Time, Distance

View Metadata Page

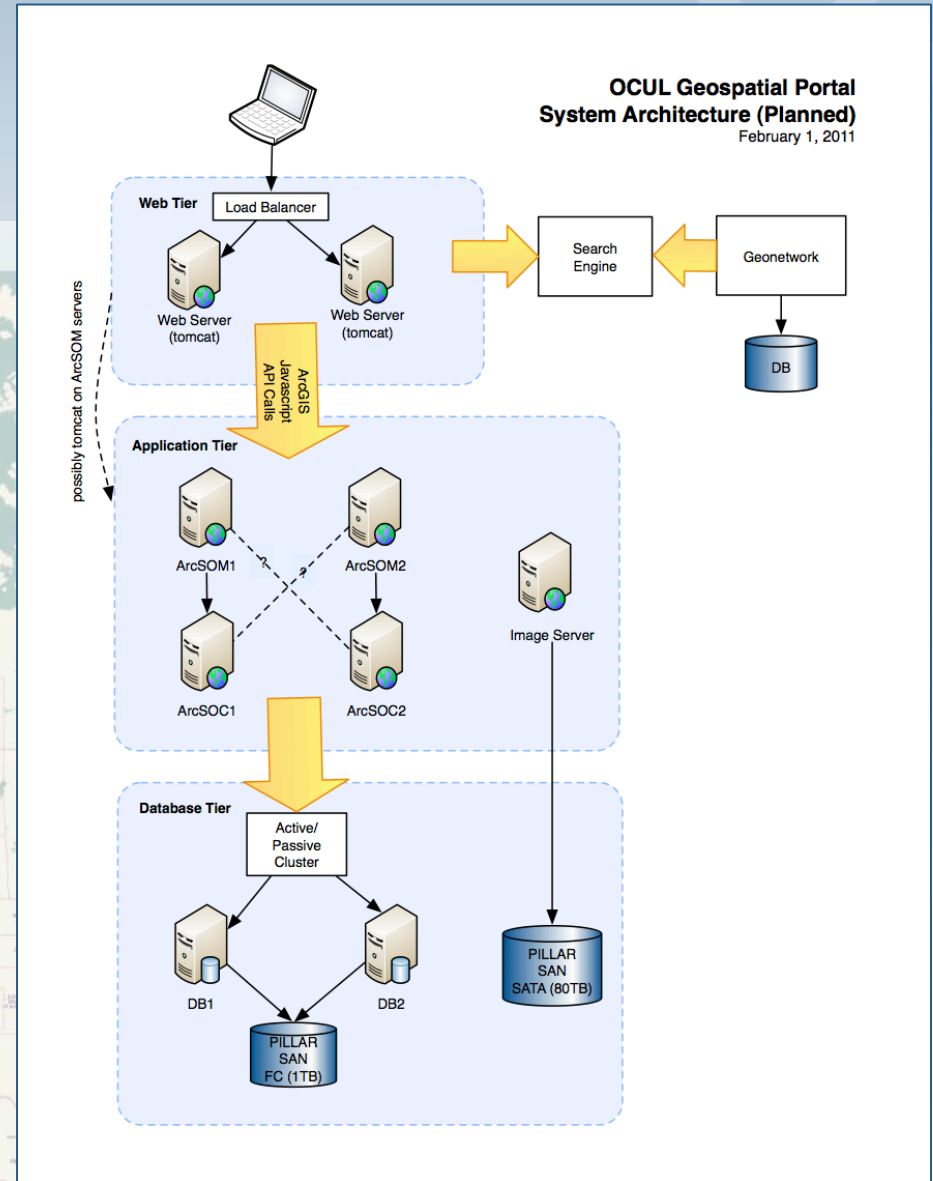
Route File (RTE)
The Route file is the core routing layer based on the Canmap roads layer (i.e., RDS). Many of the attributes found in the RDS file are in the RTE file but it also includes routing specific attributes. These include, but are not limited to...

Route File (RTE)
The Route file is the core routing layer based on the Canmap roads layer (i.e., RDS). Many of the attributes found in the RDS file are in the RTE file but it also includes routing specific attributes. These include, but are not limited to...

Route File (RTE)
The Route file is the core routing layer based on the Canmap roads layer (i.e., RDS). Many of the attributes found in the RDS file are in the RTE file but it also includes routing specific attributes. These include, but are not limited to...

Route File (RTE)
The Route file is the core routing layer based on the Canmap roads layer (i.e., RDS). Many of the attributes found in the RDS file are in the RTE file but it also includes routing specific attributes. These include, but are not limited to...

Route File (RTE)
The Route file is the core routing layer based on the Canmap roads layer (i.e., RDS). Many of the attributes found in the RDS file are in the RTE file but it also includes routing specific attributes. These include, but are not limited to...



Scholars Portal and Health Data

- Scholars Portal can:
 - Provide access to anonymized health data
 - Restrict access to members of the academic community, via IP and proxies
 - Restrict access on an institution-by-institution basis
 - Archive data according to TDR best practices
- Scholars Portal cannot:
 - Protect identifying information
- Scholars Portal is interested in:
 - Working with health data providers to facilitate projects to anonymize and make health data available

Questions?

